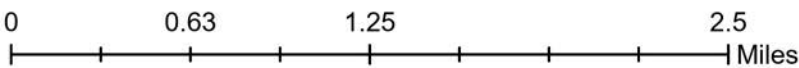
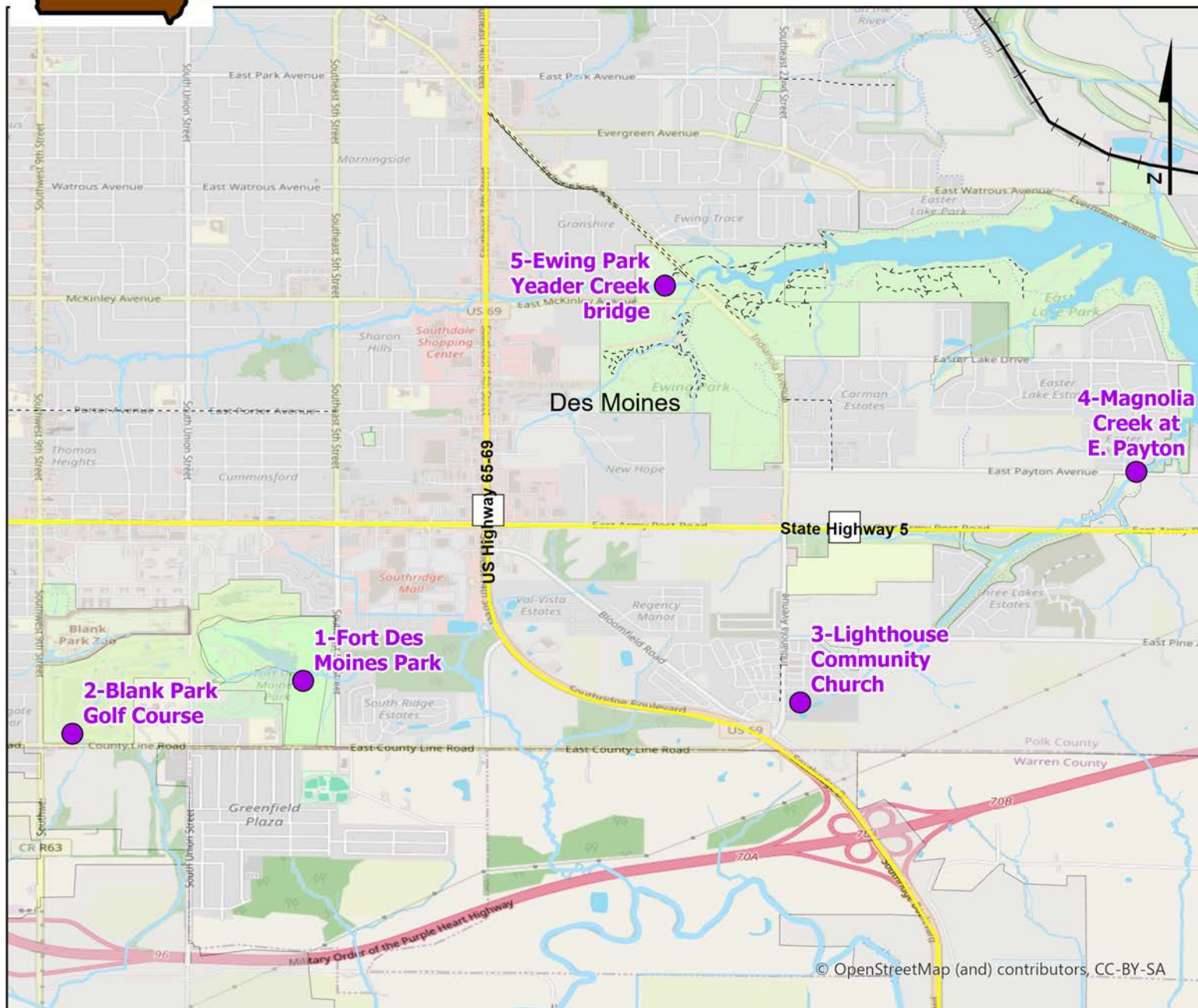


Volunteer Wildlife Monitoring Program (VWMP) Frog and Toad Survey



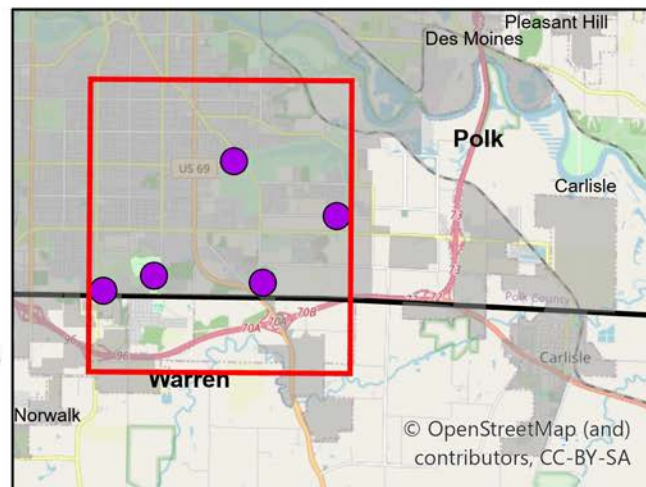
Route ID: 303 County: Polk



Legend

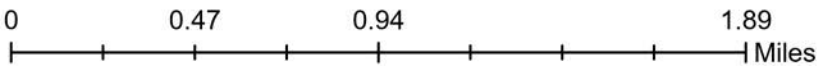
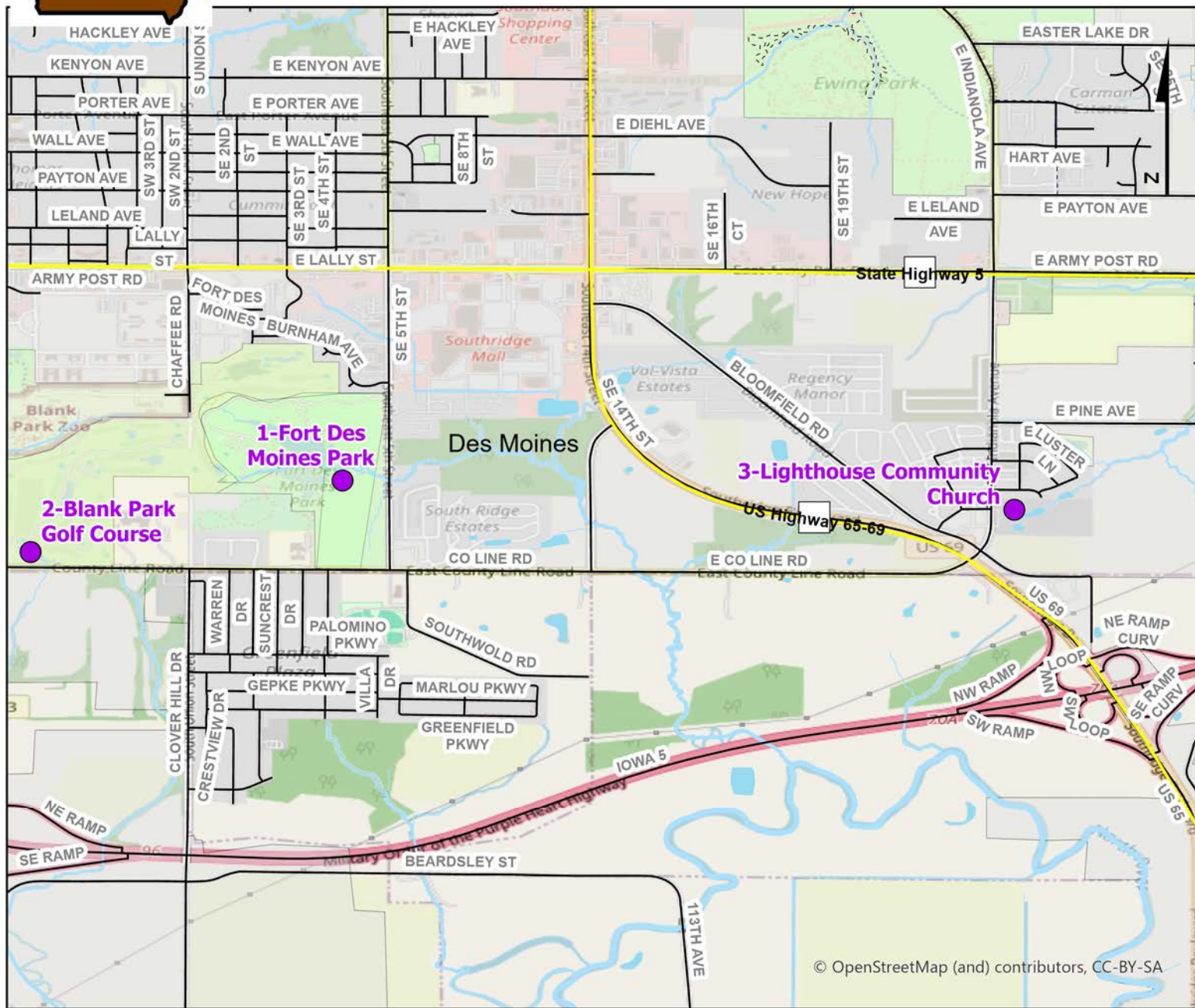
----- Trails

● Survey Stops



Volunteer Wildlife Monitoring Program (VWMP) Frog and Toad Survey

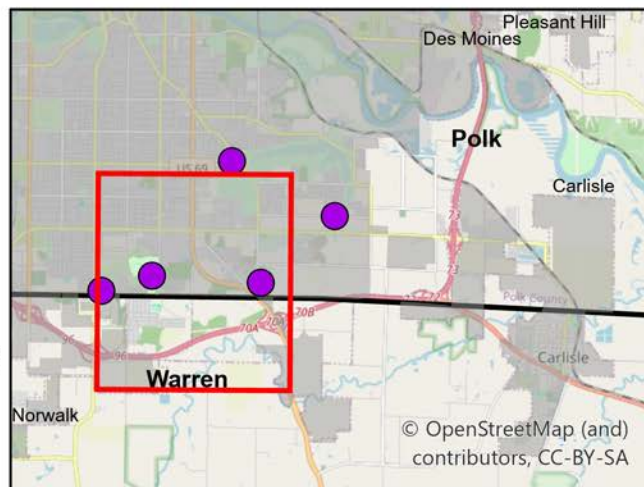
Route ID: 303 County: Polk



Legend

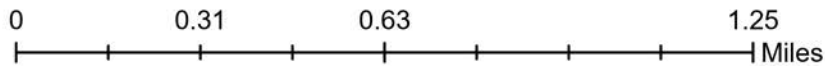
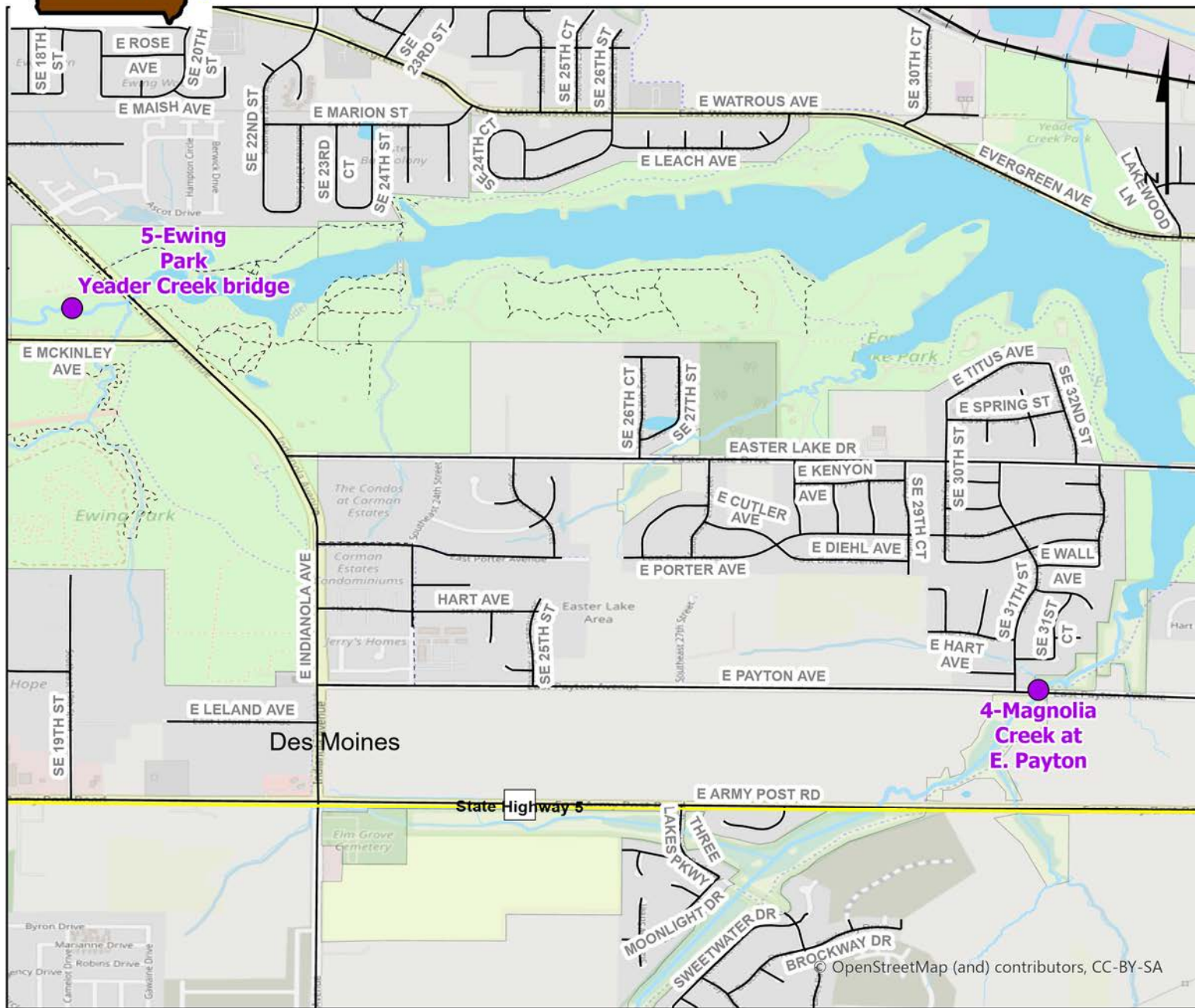
----- Trails

● Survey Stops



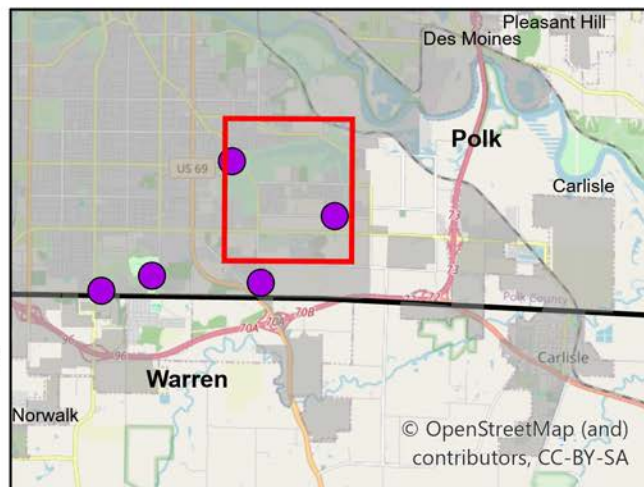
Volunteer Wildlife Monitoring Program (VWMP) Frog and Toad Survey

Route ID: 303 County: Polk



Legend

- Trails
- Survey Stops





Frog and Toad Call Survey Route Description

Route ID **303**

Established: **2022**

Site Number	Name	County	Latitude	Longitude	Directions
1	Fort Des Moines Park	Polk	41.51619	-93.60864	The park entrance is off SE 5th Street. Enter the park and take the first left. That will lead you to the parking lot for Shelter 1 and the boat ramp. Park near the boat ramp, step out of your car and listen.
2	Blank Park Golf Course	Polk	41.512766	-93.623591	Park at the clubhouse parking lot near the intersection of SW 9th Street and County Line Road. Walk to the pond behind the clubhouse near the 18th hole. Stand at the north end of the pond on the paved golf cart trail.
3	Lighthouse Community Church	Polk	41.51479	-93.57644	The church address is 7705 Indianola Avenue. The pond is behind the church and is accessed from the northside parking lot. Drive to the back corner of the parking lot closest to the church. The survey can be done from the nearby sidewalk.
4	Magnolia Creek at E. Payton	Polk	41.529716	-93.554662	Parking exists on both sides of E. Payton Avenue where Magnolia Creek passes through a culvert under the road and continues to Easter Lake. At night it would be better to park on the north side of E. Payton Avenue because the designated roadside parking is about 2' wider than the south side parking. You can stand on the northside sidewalk to do the survey.



Frog and Toad Call Survey Route Description

5	Ewing Park Yeader Creek bridge	Polk	41.541768	-93.585202	At 4660 Indianola Avenue is the parking lot for Ewing Dog Park. Park at the west end of this lot. Walk to the pedestrian bridge over Yeader Creek which is a few yards south of the parking lot. (You might stop at the parking before you enter your car to see if you hear other frogs along Yeader Creek. The toads were so loud, we couldn't hear the other frogs until we walked away from the bridge.)
---	-----------------------------------	------	-----------	------------	--